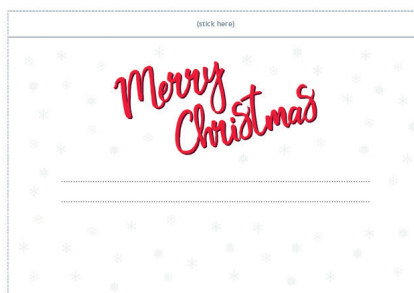
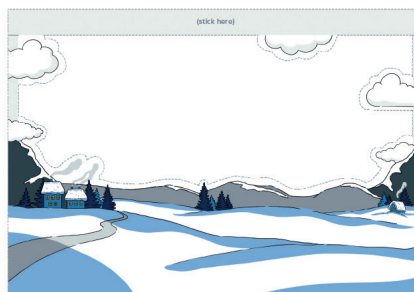
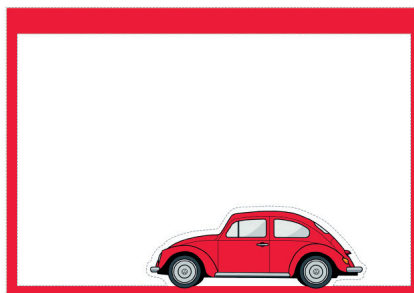


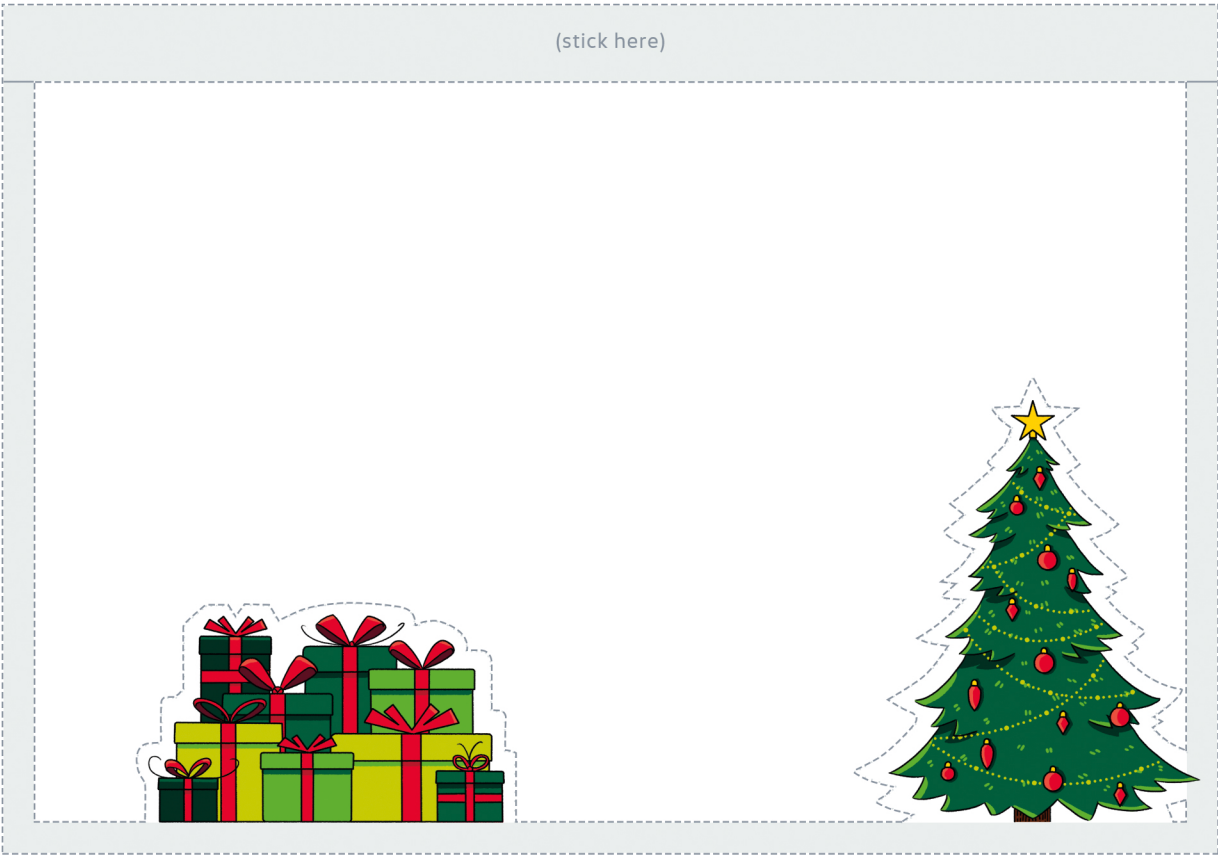
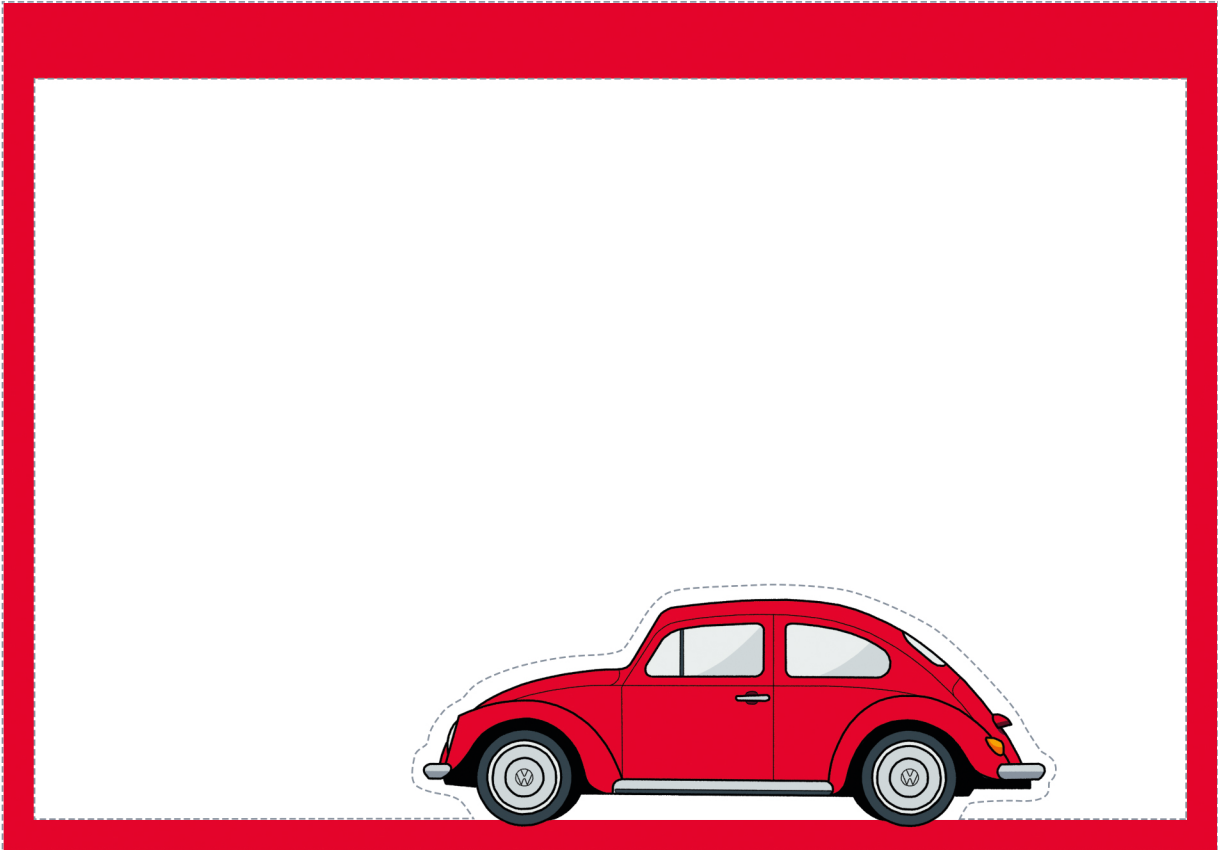


FREE PRINTABLE

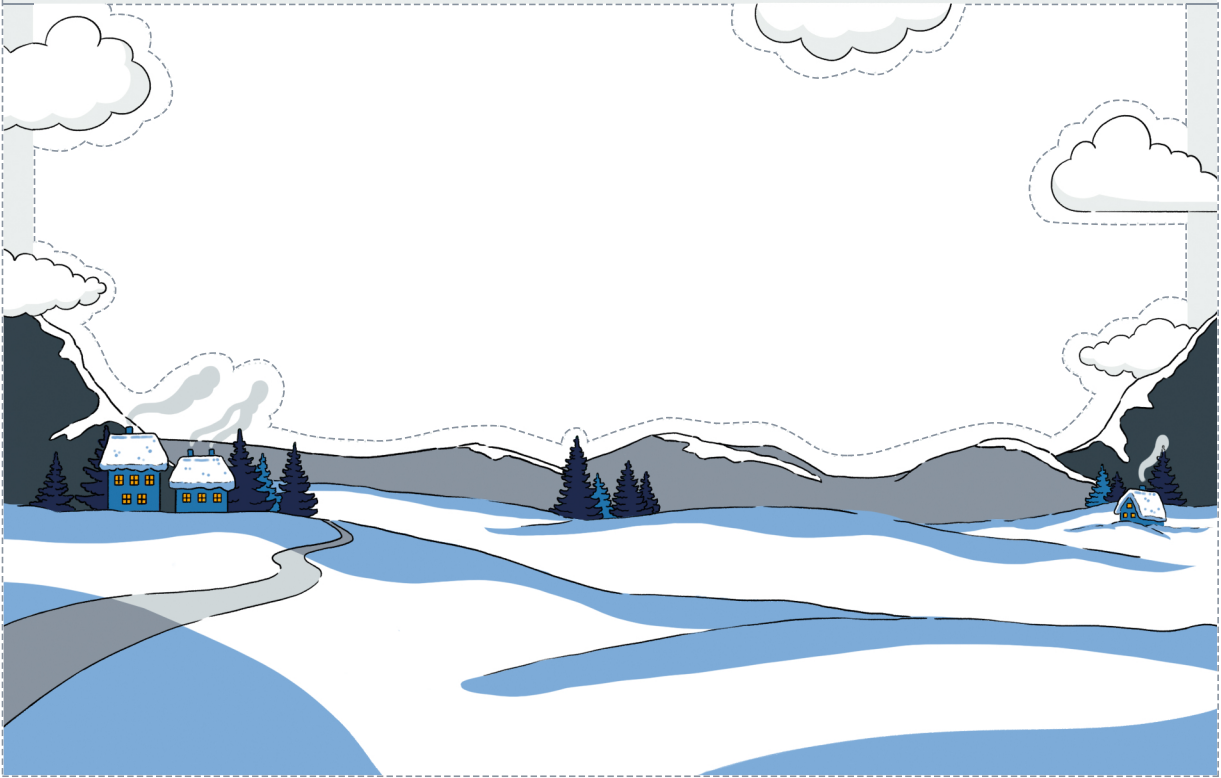
VOLKSWAGEN CHRISTMAS CARD



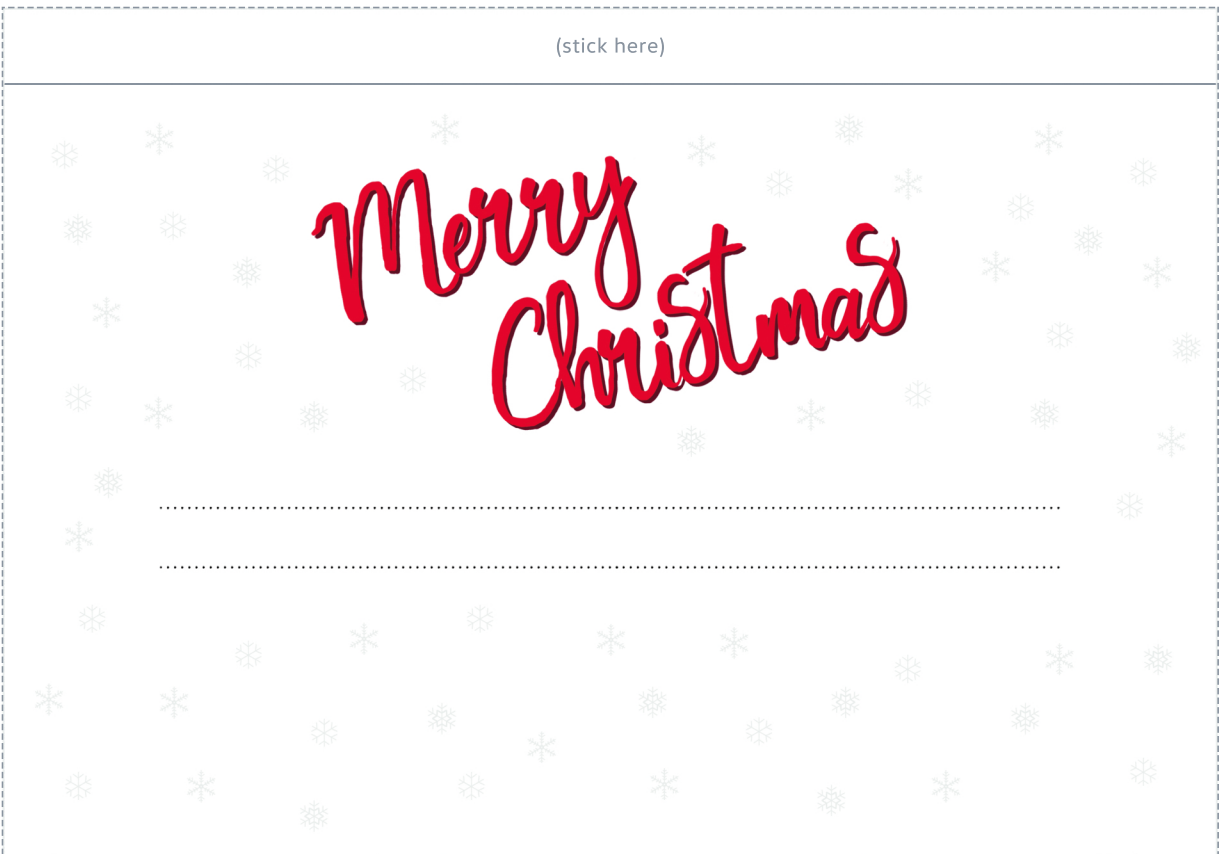
Precoloured Version



(stick here)

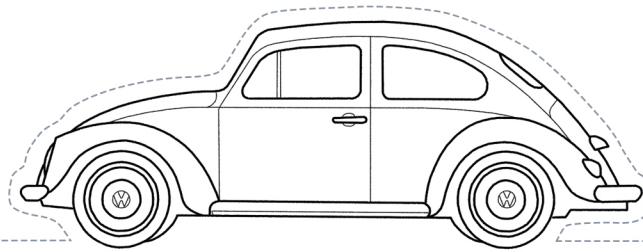


(stick here)



Version for colouring

(stick here)



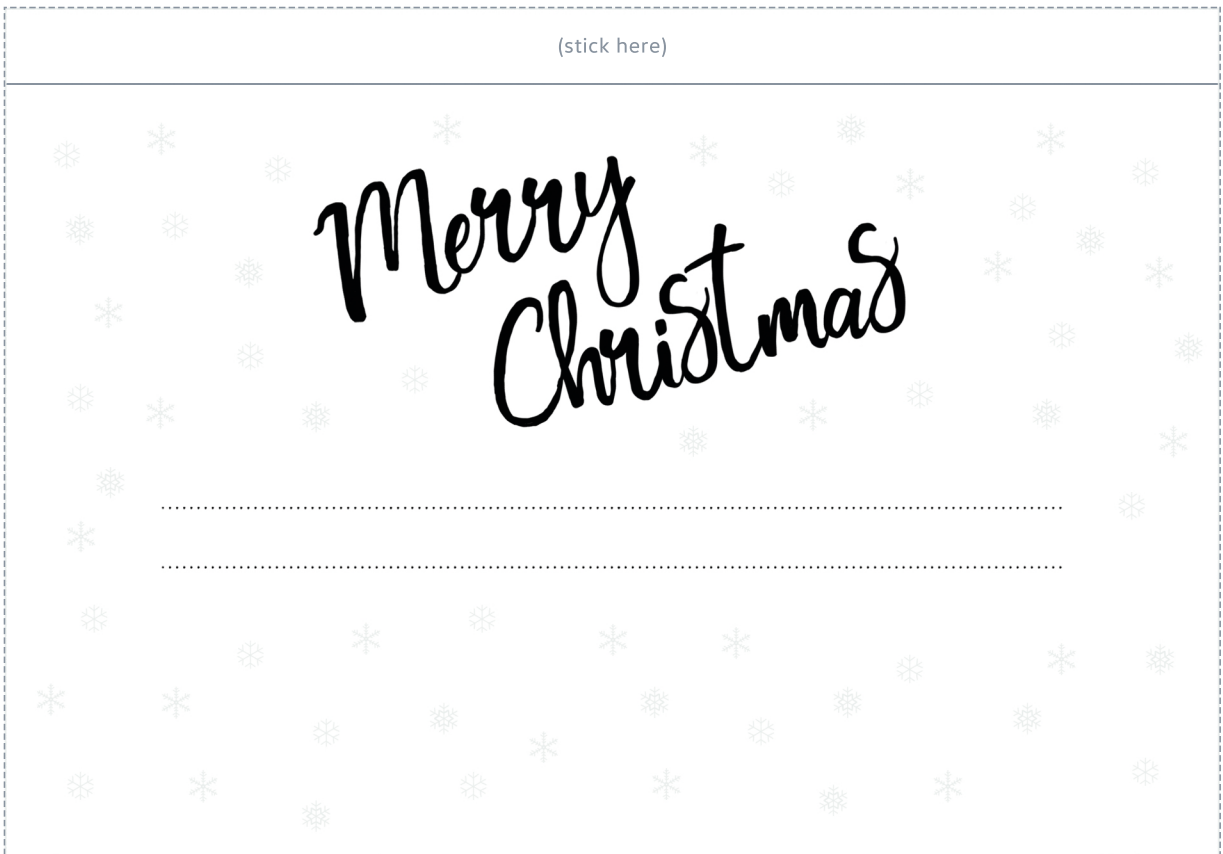
(stick here)



(stick here)



(stick here)



You need:

2 pieces of A4 card or thick paper (paper thickness: 200g/m²),
scissors, glue stick.

How to:

Print PDF and cut along dotted lines.

Arrange papers so illustrations appear in this order from bottom to top:

1. Merry Christmas
2. Snow landscape
3. Christmas tree and presents
4. Volkswagen Beetle

Glue together along the top frame. As the "Merry Christmas" layer is on top, make sure not to put glue on the front. After gluing the top frames together, fold all 4 layers along the upper frame (beneath the glue line).

Now the card can be set up.

Add your festive message on the lines provided and put into a matching envelope.

You are done!